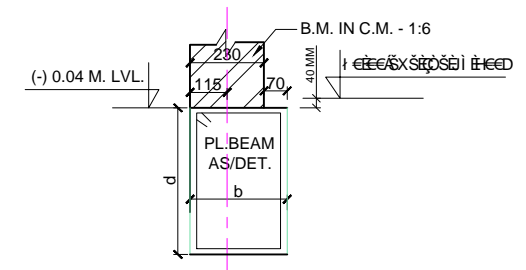


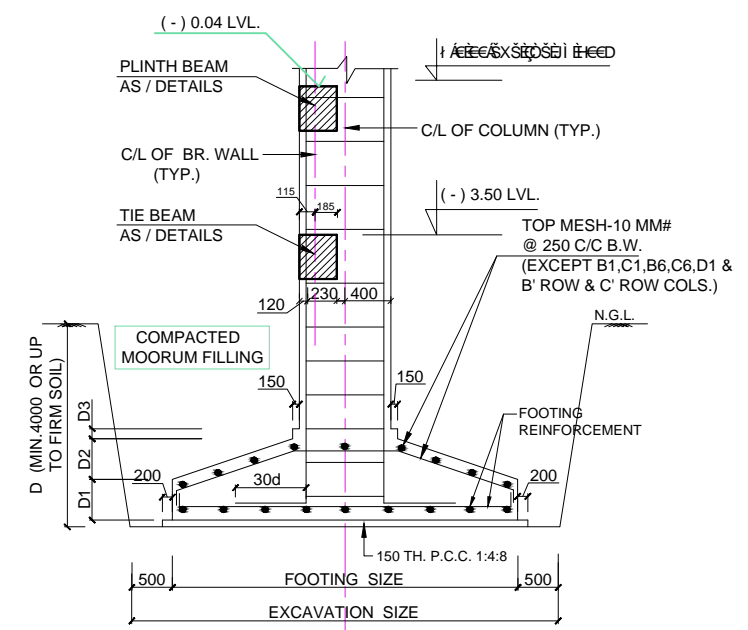
SCHEDULE OF FOOTINGS & COLUMNS (M:20) :														
S.NO.	TYPE	EXCAVATION SIZE	FOOTING SIZE	BOTTOM MESH REINFORCEMENT		D1	D2	D3	D	COLUMN SIZE	COLUMN MAIN BARS	COLUMN TIES	CROSS SEC.	REMARK
				PARALLEL TO SHORTER SPAN	PARALLEL TO LONGER SPAN									
01.	A'1	4150X4600	3150X3600	26 - 16 #	21 - 16 #	350	350	150	4000	600X900	12 - 32 # (●) + 4 - 20 # (○)	8 # @ 225 C/C [4 TIES PER SET]		UP TO CRANE BRACKET & TRUSS BOTTOM LVL.
02.	A'2	4950X5600	3950X4600	16 - 20 # 16 - 16 # [ALT.]	28 - 16 #	375	350	150	4000	600X900	16 - 32 # (●) + 4 - 20 # (○)	8 # @ 200 C/C [4 TIES PER SET]		"
03.	A'3,A'4,A'5 & A'6	3900X4600	2900X3600	24 - 16 #	18 - 16 #	350	325	150	4000	500X900	4 - 32 # (●) + 12 - 25 # (○) + 4 - 16 # (○)	8 # @ 250 C/C [4 TIES PER SET]		"
04.	A1	5250X5950	4250X4950	19 - 20 # 18 - 16 # [ALT.]	32 - 16 #	375	375	150	4000	650X1000	16 - 32 # (●) + 4 - 20 # (○)	8 # @ 200 C/C [4 TIES PER SET]		"
05.	A2	6400X6900	5400X5900	47 - 20 #	36 - 20 #	400	425	200	4000	750X1000	16 - 32 # (●) + 4 - 20 # (○)	8 # @ 200 C/C [4 TIES PER SET]		"
06.	A3, A4, A5 & A6	6250X6700	5250X5700	42 - 20 MM #	33 - 20 #	400	400	200	4000	600X1000	16 - 32 # (●) + 4 - 20 # (○)	8 # @ 225 C/C [4 TIES PER SET]		"
07.	B1,C1,B6 & C6	4000X4550	3000X3550	26 - 16 #	20 - 16 #	350	350	150	4000	400X900	12 - 25 # (●) + 4 - 16 # (○)	8 # @ 225 C/C [3 TIES PER SET]		"
08.	D1	4100X4600	3100X3600	26 - 16 #	20 - 16 #	350	350	150	4000	500X1000	12 - 25 # (●) + 4 - 16 # (○)	8 # @ 225 C/C [3 TIES PER SET]		"
09.	D2,D3,D4,D5 & D6	4850X5400	3850X4400	15 - 20 # 15 - 16 # [ALT.]	26 - 16 #	375	350	150	4000	500X1000	12 - 32 # (●) + 4 - 25 # (○) + 4 - 16 # (○)	8 # @ 250 C/C [4 TIES PER SET]		"
10.	B'2 & C'2	7250X2500	6250X1500	REFER SHEET NO. - 4 OF 6					4000	600X600	8 - 25 #	10 # @ 250 C/C [2 TIES PER SET]		UP TO +9.00 M.LVL.
11.	B'3 & C'3	6000X2500	5000X1500	REFER SHEET NO. - 5 OF 6					4000	500X600	8 - 25 #	10 # @ 250 C/C [2 TIES PER SET]		"
12.	B'4 & C'4	9500X2500	8500X1500	REFER SHEET NO. - 6 OF 6					4000	600X600	4 - 32 # (●) + 4 - 25 # (○)	10 # @ 225 C/C [2 TIES PER SET]		"
13.	B'5 & C'5	3700X3700	2700X2700	20 - 16 #	20 - 16 #	375	375	150	4000	500X600	8 - 25 #	10 # @ 250 C/C [2 TIES PER SET]		"

PLINTH BEAMS DETAIL (M:20) AT (-) 0.04M LVL.												
S. NO.	SYMBOL	SIZE		TOP BARS		BOTTOM BARS		TOP EXTRA OVER SUPPORTS		STIRRUPS		S/F REINF.
		b	d	STRAIGHT	CURTAILED	LEFT SUPPORT	RIGHT SUPPORT	FROM EITHER SUPPORTS	FOR REST OF THE SPAN			
01.	PB-1	300	600	3 - 12 #	3 - 20 #	2 - 16 #	2 - 20 #	3 - 20 #	8 # @ 150 C/C	8 # @ 150 C/C	1 - 12 #	
02.	PB-2	300	600	3 - 12 #	3 - 20 #	2 - 16 #	3 - 20 #	3 - 20 #	8 # @ 150 C/C	8 # @ 150 C/C	"	
03.	PB-3	300	600	3 - 12 #	3 - 20 #	2 - 16 #	3 - 20 #	4 - 20 #	8 # @ 150 C/C	8 # @ 150 C/C	"	
04.	PB-4	300	650	3 - 12 #	3 - 20 #	2 - 20 #	4 - 20 #	4 - 20 #	8 # @ 125 C/C UP TO 2000	8 # @ 150 C/C	"	
05.	PB-5	300	600	3 - 12 #	3 - 20 #	2 - 16 #	4 - 20 #	3 - 20 #	8 # @ 125 C/C UP TO 2000	8 # @ 150 C/C	"	
06.	PB-6	300	500	2 - 12 #	3 - 16 #	2 - 16 #	3 - 16 #	4 - 16 #	8 # @ 150 C/C	8 # @ 150 C/C	-	
07.	PB-7	300	500	2 - 12 #	3 - 16 #	2 - 16 #	4 - 16 #	4 - 16 #	8 # @ 150 C/C	8 # @ 150 C/C	-	
08.	PB-8	300	500	2 - 12 #	3 - 16 #	2 - 16 #	4 - 16 #	5 - 20 #	8 # @ 150 C/C	8 # @ 150 C/C	-	
09.	PB-9	300	650	4 - 20 #	4 - 20 #	3 - 20 #	3 - 20 #	3 - 20 #	10 # @ 125 C/C UP TO 2500	10 # @ 150 C/C	1 - 12 #	
10.	PB-10	300	300	3 - 16 #	3 - 16 #	-	-	-	8 # @ 150 C/C	8 # @ 150 C/C	-	
11.	PB-11	300	300	4 - 20 #	3 - 16 #	-	-	-	8 # @ 150 C/C	8 # @ 150 C/C	-	

TIE BEAMS DETAIL (M:20) AT (-) 3.50M LVL.											
12.	TB-1	300	500	4 - 16 #	4 - 16 #	-	-	-	8 # @ 150 C/C	8 # @ 150 C/C	-
13.	TB-2	300	400	3 - 16 #	3 - 16 #	-	-	-	8 # @ 175 C/C	8 # @ 175 C/C	-
14.	TB-3	300	550	4 - 20 #	4 - 20 #	-	-	-	10 # @ 150 C/C	10 # @ 150 C/C	-
15.	TB-4	300	300	3 - 12 #	3 - 12 #	-	-	-	8 # @ 175 C/C	8 # @ 175 C/C	-



TYP. DET. OF TIE / PLINTH BEAM SECTION AT "X-X"



TYP. FOOTING DETAILS