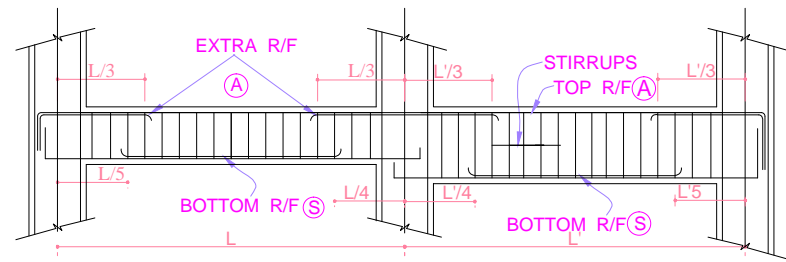
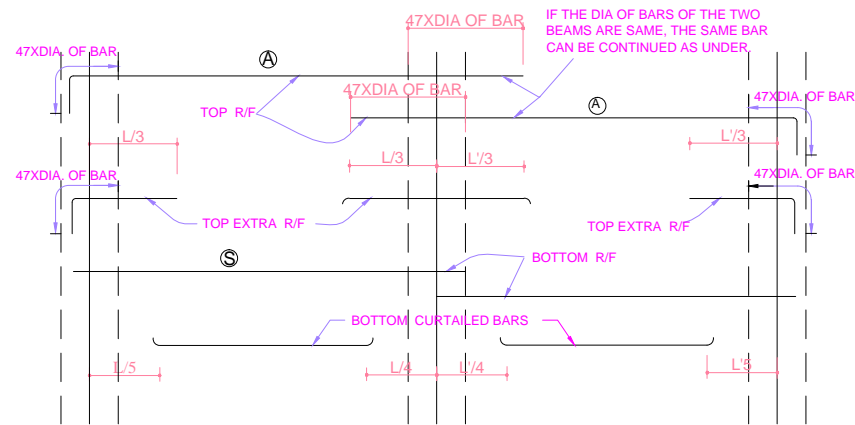


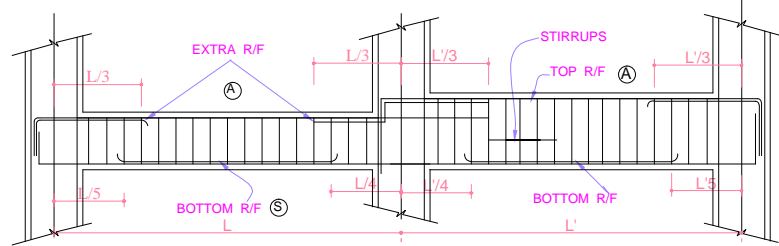
**WHEN THE SIZES OF ADJACENT BEAMS ARE UNEQUAL AND TOP LEVEL IS SAME**



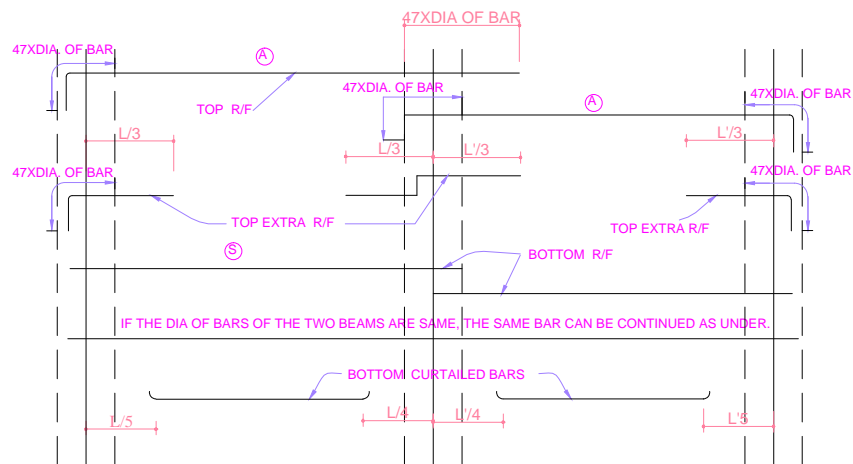
TYPICAL SECTION OF BEAM (LONGITUDINAL)



**WHEN THE SIZES OF ADJACENT BEAMS ARE UNEQUAL AND BOTTOM LEVEL IS SAME**

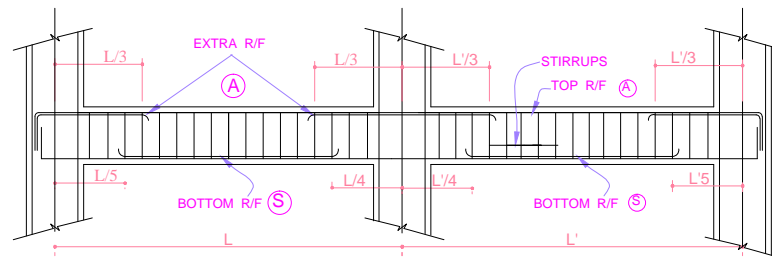


TYPICAL SECTION OF BEAM (LONGITUDINAL)

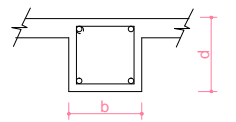
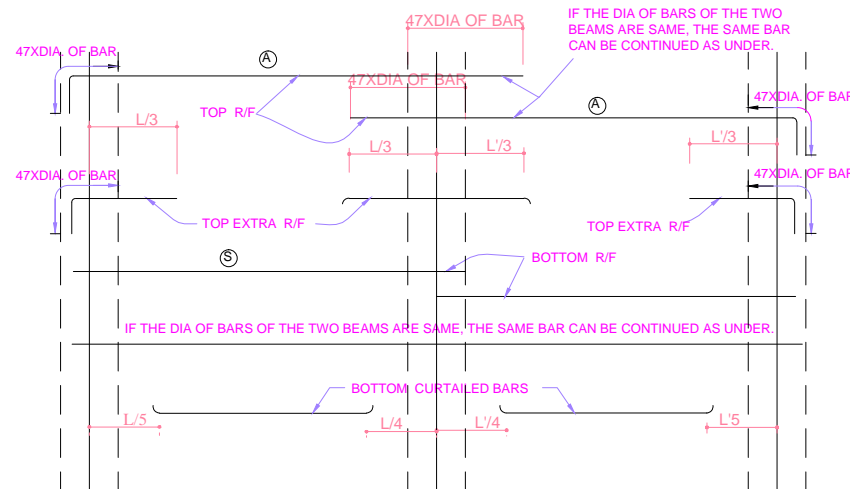


**NOTE** - TOP EXTRA BARS AT CONNECTED ENDS OF TWO BEAMS HAVE BEEN GIVEN SAME GENERALLY. BUT IF IN SOME BEAMS (WHERE WIDTH OF BEAMS ARE DIFFERENT) THEY ARE NOT SAME. IN SUCH CASES THE NO. OF EXTRA BARS SHOULD BE ANCHORED TO THE COLUMN.

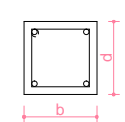
**WHEN THE SIZES OF ADJACENT BEAMS ARE EQUAL**



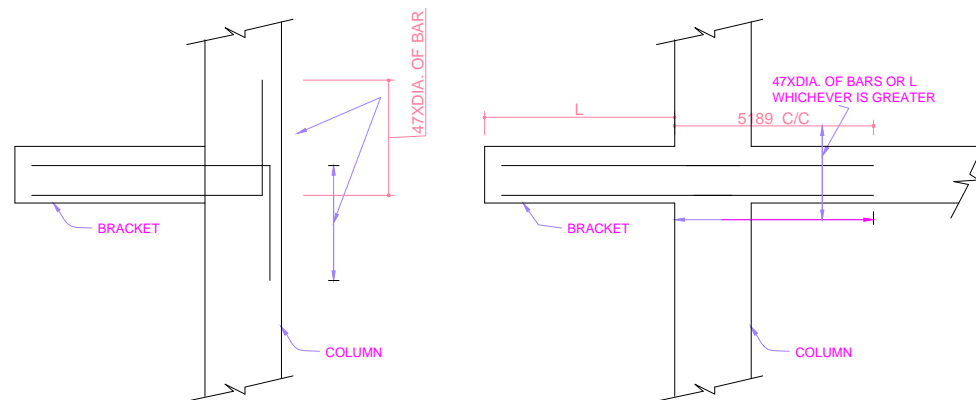
TYPICAL SECTION OF BEAM (LONGITUDINAL)



C/S OF BEAM WITH SLAB

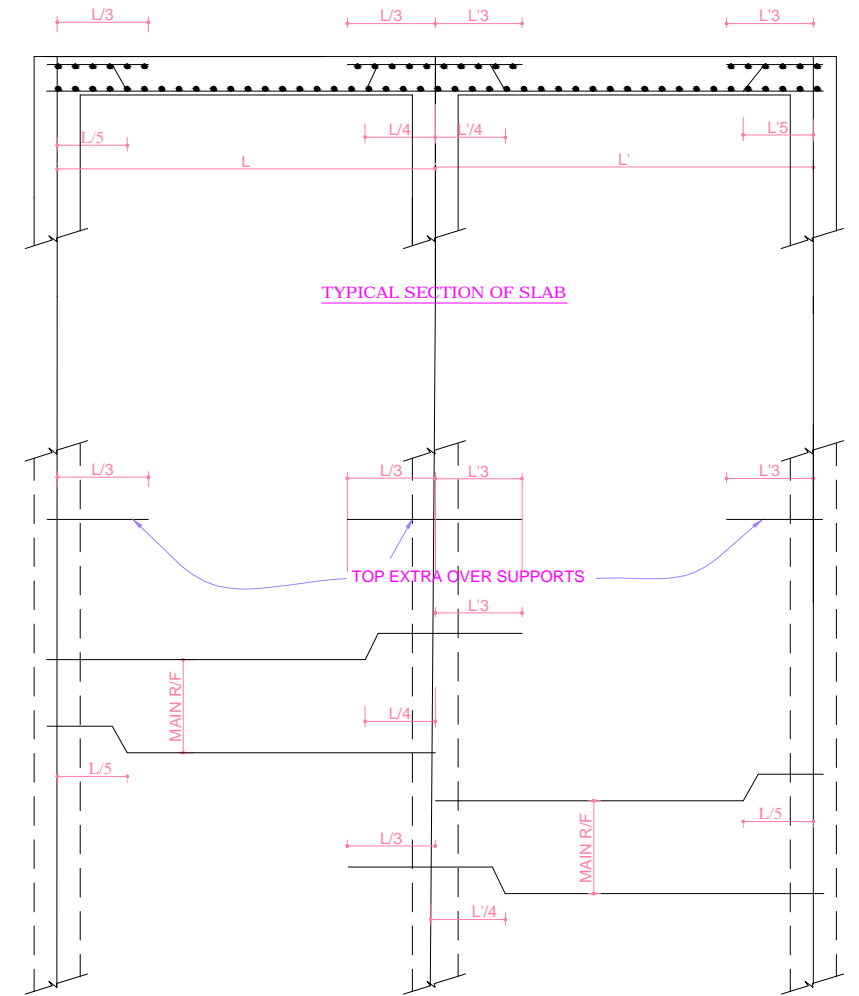


C/S OF BEAM WITHOUT SLAB



**NOTE** - TOP AND BOTTOM BARS OF BRACKETS SHOULD BE EXTENDED IN TO REAR BEAM BY 57X DIA. OF BARS OR LENGTH OF BRACKETS WHICHEVER IS GREATER. IF THERE IS NO REAR BEAM THEY SHOULD BE ANCHORED TO THE COLUMN BY 47XDIA. OF BAR.

TYPICAL SECTION OF BRACKETS SHOWING ANCHORING OF MAIN BARS



TYPICAL SECTION OF SLAB

**TYPICAL SECTIONS OF BEAMS AND SLABS**